

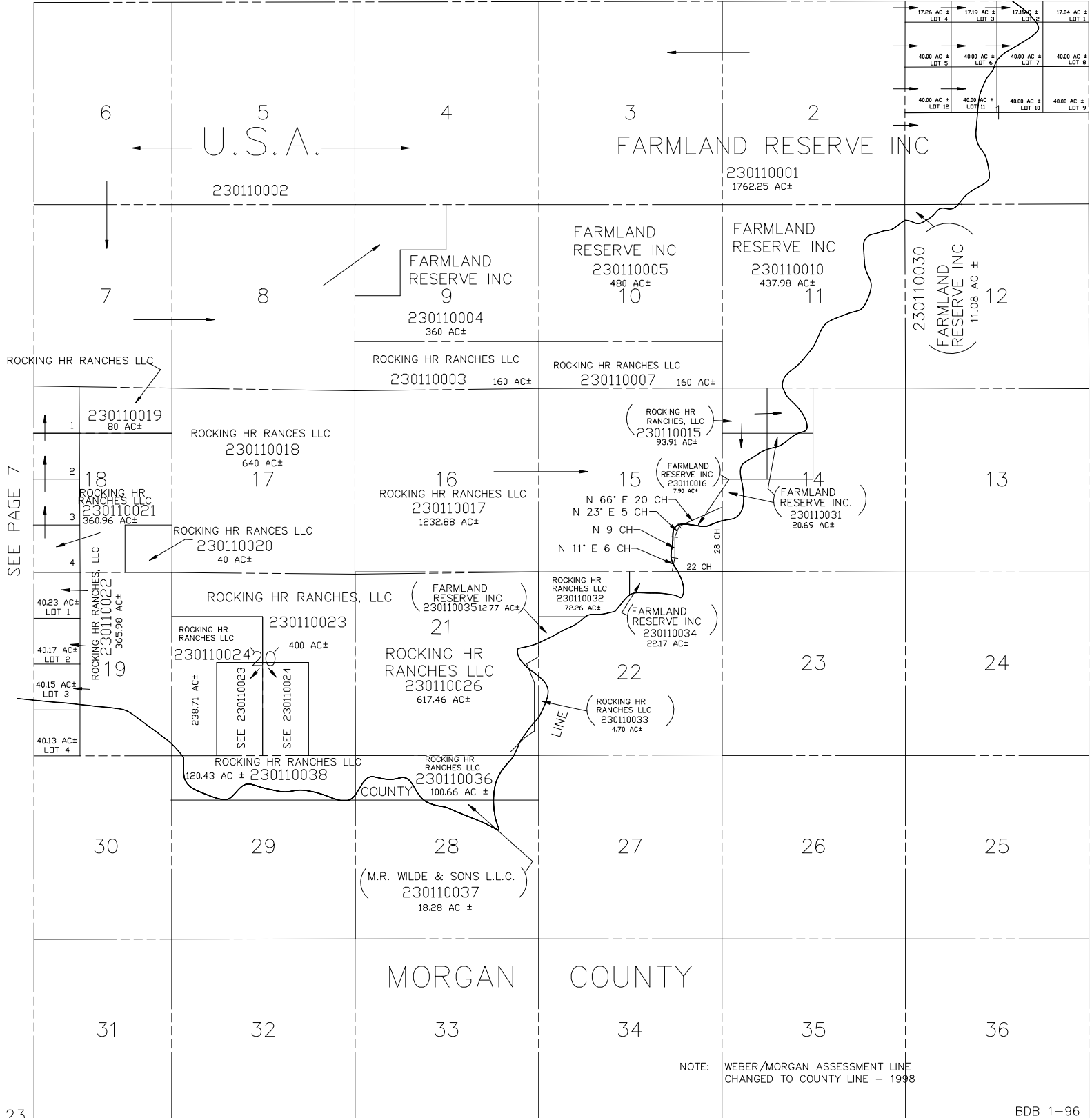
T.6N., R.4E., S.L.B. & M.

TAXING UNIT: 58

SEE PAGE 42 IN WEBER COUNTY

SCALE 1" = 2000'

11



SEE PAGE 7

23

NOTE: WEBER/MORGAN ASSESSMENT LINE CHANGED TO COUNTY LINE - 1998

BDB 1-96